

HALL 1

UPDATED : 14.05.2026

FREIGHT GATE

EMERGENCY EXIT

EMERGENCY EXIT



SHAFT

HALL 1

Flexible packaging, Printing, Lamination, Inks etc..

MAXIMUM CLEAR HEIGHT IS 10 MTRS
FREIGHT GATE : 6 Sqm

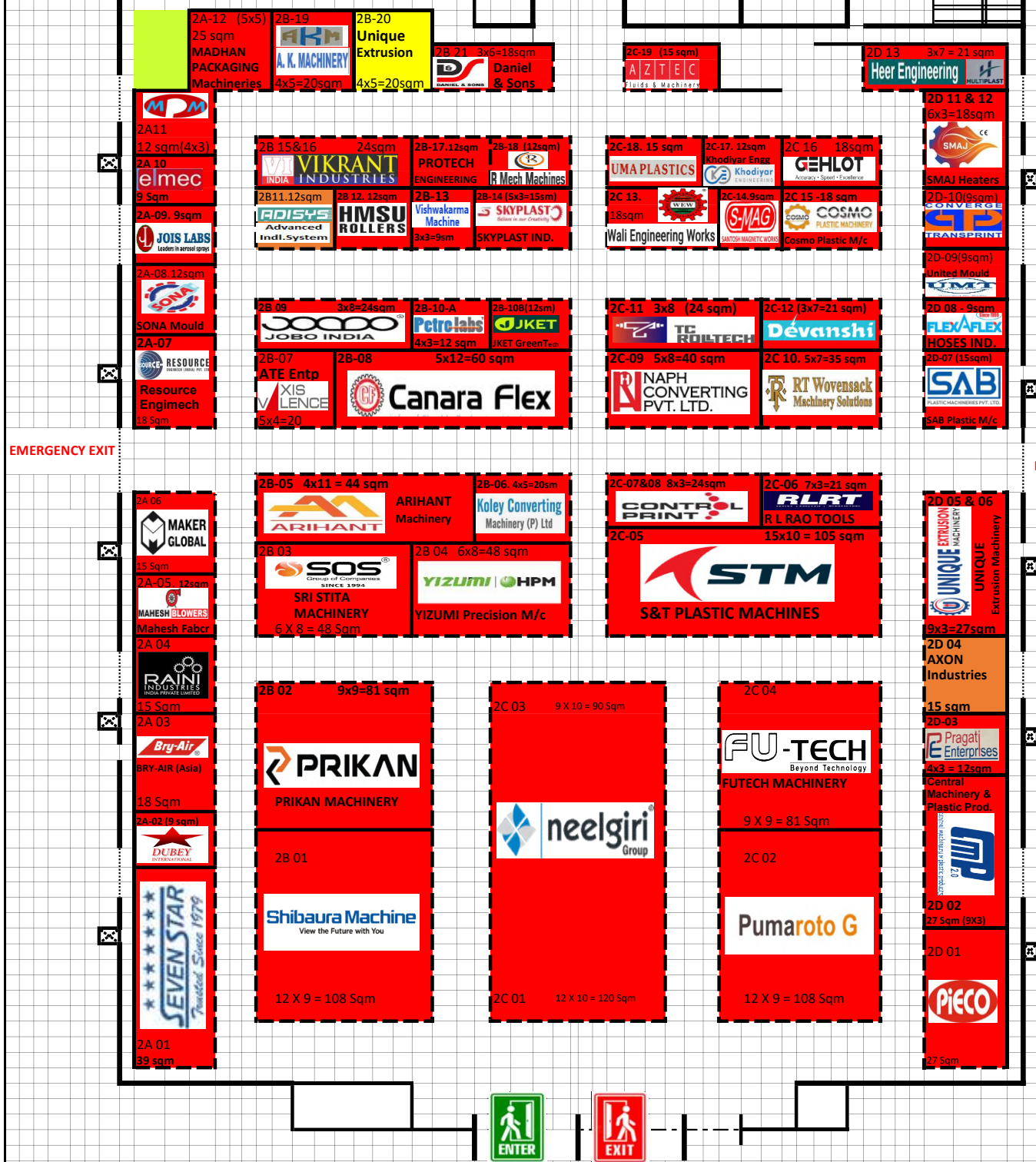
Entry / Exit: 12 Sqm
EMERGENCY EXIT: 4 Sqm

HALL 2

UPDATED : 14.05.2026

6mt. X 6 mt.

FREIGHT GATE



EMERGENCY EXIT

EMERGENCY EXIT



HALL 2

Extrusion, Injection moulding, Blow Moulding, Moulds, Auxiliary Machinery etc..

MAXIMUM CLEAR HEIGHT IS 8 MTRS
 FREIGHT GATE : 6 Sqm
 Entry / Exit: 12 Sqm
 EMERGENCY EXIT: 4 Sqm

HALL 3

UPDATED : 14.05.2026

6mt. X 6 mt.

FREIGHT GATE



EMERGENCY EXIT

EMERGENCY EXIT



SHAFT

HALL 3

Extrusion, Injection moulding, Blow Moulding, Moulds, Auxiliary Machinery etc..

MAXIMUM CLEAR HEIGHT 10 MTRS
FREIGHT GATE : 6 Sqm

Entry / Exit: 12 Sqm
EMERGENCY EXIT: 4 Sqm

HALL 4

FREIGHT ENTRY

FREIGHT ENTRY

UPDATED : 14.05.2026

Toilet (F)

Toilet (M)

Green room 3

Green Room 4

VIP Lounge

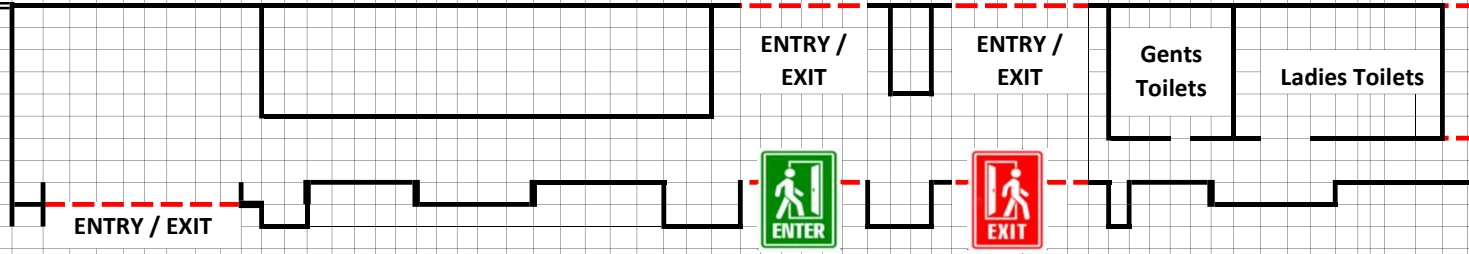
Vip waiting

VIP ENTRY

4B08 Rgt Polychem 12 sqm	4B-09 HueBrights 9 sqm	4B-10 Kelvn Labs 9 sqm	4B-11 SINGLA 9 sqm	4B-12 ATUL Chemicals 9 sqm	4B-13 Moham Infinity 9 sqm	4C-11 SGA Polychem 9 sqm	4C-12 ZHZRACL 9 sqm	4C-13. 9x3 = 27 sqm COLMAN	4D-09 = 21 sqm Vimal Vimal Mineral	4E-08,09=21 sqm LIFELINE Technology	4E10&11, 18sqm Jairam DEX	4F 12 13 18 Sqm Rc Gold
4A 14 PEXCEL 18 sqm	4B 07 7x10=70sqm BOORUGU & Co. Innovation and Trust		4C-08, 15 sqm SUMIT INDUSTRIES		4C-09, 10 =18 sqm ADITYA Plastic Ind.		4D 08 Raghav Polymers 7x5=35 sqm	4D-07 SPP Sri Sri Polymers 7 x 6 = 42 sqm	CAPITAL COLOURS 4E 07 7x10=70Sqm		4F 11 Simandhar Polymers 12 Sqm	
4A 13 ARTI 18 sqm	4B 05 NK Agencies Pvt Ltd 8 X 5 = 40 Sqm		4B 06 AXIA PLASTICS 8 X 5 = 40 Sqm		4C 05 Sree Mantralaya Petrochem Sree Raviteja Polymers 8x6 = 48 sqm		4C 06 Sree Mantralaya Petrochem 8x5=40 sqm		4 D05 Omega Polymers 8 X 5 = 40 Sqm	4D 06 NV N.V.Polymers 8 x 6 = 48 sqm	4E 05 SRM Products 8x5=40 Sqm	4E 06 Kunthunath Polymers 8x5=40 Sqm
4A11&12 27 sqm	4B 03 TRUZON SOLAR 10x5=50 Sqm		4B 04 VIJAYNEHA POLYMERS PVT. LTD. 10 X 5 = 50 Sqm		4C-03 SANTENDRA PACKAGING LTD 10x5=50 sqm	4C 04 GUJARAT POLYVERSE Mohanal and Sons CAMEX 10x6=60 Sqm		4D 03 CENTAUR 10x5=50 Sqm	4D 04 ester ESTER FILM-TECH 10X6 = 60 Sqm	4E 03 SRI SHYAM ADDITIVES 10x5 = 50 Sqm	4E 04 SRI MADHAV POLYCHEM 10X5=50 Sqm	4F-09 & 10 7x3=21sqm
4B 10 4B 09 4B 08 30 Sqm	4A 07 4A 06 4A 05 4A03&04 SAVERA PIPES 24 sqm		4B 02 Shyam Arianth Plastic, Chemical, Packaging Film 10 X 10 = 100 Sqm		4C-02 A neelgiri Chemicals 9x6=54 sqm	4C-02 B neelgiri Chemicals 9x5 = 45 sqm	4D-02-A COSMO FILMS 9x5=45 sqm	4D-02 B CHIRIPAL POLY FILMS LIMITED 6x9 = 54 sqm	4E 02 BLEND CONSCIOUS CHEMISTRY 10 X 10 = 100 Sqm		4F 08 Chime 9 Sqm	4F 06-07 PRAKASH Chemicals 18 sqm
Poly Colour Ltd 4B 10 4B 09 4B 08 30 Sqm	4A 02 JK Paras Polycosats 18 sqm		4B 01 SUDHAKAR PROFILE SYSTEMS 15 X 10 = 150 Sqm		4C 01 GAIL (India) Limited 16 X 11 = 176 Sqm		4D 01 RESERVED FOR IndianOil 16 X 11 = 176 Sqm	4E 01 RESERVED FOR Reliance 15 X 10 = 150 Sqm		4F 05 A. M. MASTER BATCH 18 Sqm	4F 02 Solar Bull ENERGY LLP 8X3 24 Sqm	4F 01 Makys 27 Sqm
VIBGYOR 27 Sqm	4A 01		4A 01		4A 01		4A 01		4A 01		4A 01	

EMERGENCY EXIT

EMERGENCY EXIT



HALL 4

Raw Materials, Masterbatches & Additives etc

MAXIMUM CLEAR HEIGHT 10 MTRS

FREIGHT GATE : 6 Sqm

Entry / Exit: 6 Sqm

EMERGENCY EXIT: 4 Sqm

HALL 5

FREIGHT ENTRY

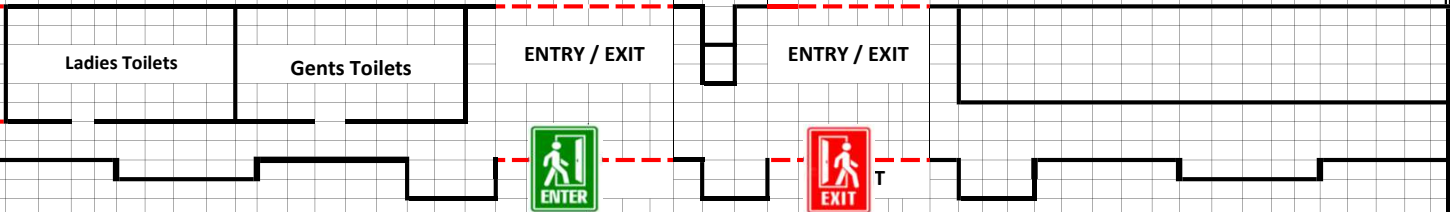
UPDATED : 14.05.2026

Service Toilet (F)	Service toilet(M)	electrical room			Green room-1	green room-2	VIP LOUNGE
--------------------	-------------------	-----------------	--	--	--------------	--------------	------------

5B-17. 12 sqm Sri Polymer Products	5B-18. Shree Nathji Dyestuffs 9sqm	5B-19. Himalaya ROPES	5B-20. BAYA Polypack	5C-17. TIRUMALA POLYMERS	5C-18. 9sqm LAXMI VARSHA	5C-19&C20. Modern Elect.Co. 3x6 = 18 sqm	5D-17. IISHAN INTERNATIONAL 9sqm	5D-18. Om Entp 12 sqm	5D-19. Flexo Solutions	5D-20. SPC Fab 9 sqm	5D21. 6x3=18 sqm Gabbar Industries
5A08. LAXMI INDUSTRIES 24 Sqm	5B-11. MEHAK INTTL. 9 Sqm	5B-12. INT'L 9 Sqm	5B-13. INT'L 15 Sqm	5C-11. INT'L 12 sqm	5C-12. INT'L 9 Sqm	5C-13. 12sqm Miracl Chem. Co. Ltd.	5D-11&14. Shejiang Choyting M/c. Co. 6x4=24sqm	5D-12. INT'L 9 sqm	5D-13. 12sqm Shandong Ropenet mc.	5E-17. INT'L 9 sqm	5E-15. IGBSNCL 9 sqm
5A 07-B. POLSTAR MKTG 18 Sqm	5B-07 to B-10. 11x11=121 sam			5C-09. 5x6=30 sqm SAMIR MACHINERY	5C-10. 5x5=25 sqm MUNDHRA MASTERBATTCES	5D-09. 5x6=30sam Venus ROTOFLEX	5D-10. 5x5=25sqm FLEXON ENGINEERS	5A 07A. AADARSH ENGG. 12 Sqm	5B-14. INT'L 12 Sqm	5B-15. TMMPMCL 12 Sqm	5E-16. SSPMF 9 sqm
5A-06. MERIT POLYMER 3x3 12sqm	5B-05. MTA MACHINERY 5x6 = 30 sqm	5B-06. 4x5=20sm S A Automation 5B-04	5C-05. 5x6=30sqm JP GROUP	5C-06. ULTRA CRAFT MOLDERS 5x5=25 Sqm	5D-07. DND MACHINERY 6x6 = 36 sqm	5D-08. 5x6=30sqm Carmel ENGINEERING	5E-14. SMPTCL 9 sqm	5A-05. GAYATRI LABELS	5E-13. JHTCL 9 sqm	5E-12. INT'L 9 sqm	5E-11. INT'L 9 sqm
5A-04. RUDRA IMPEX 12 sqm	5B-03. ColorPlas 7x6=42 sqm	Kejriwal Machineries 8 x 5 = 40 sqm	5C-03. Vikas Industries 7x6 = 42 Sqm	K MACK Indl.M/c 7x5 35 Sqm	5D-03 & 5D-05. 12x6=72 sqm TPPI TECHNOLOGY PLASTOMECH	5D-06. 5x5=25sqm KHANNA HYDRAULICS	5E-10. HT(Z)CL 9 sqm	5A-03. MANAN ENTERPRISE 12 sqm	5E-09. INT'L 9 sqm	5E-08. INT'L 9 sqm	5E-07. INT'L 9 sqm
5A 02. RANGOLI EPS 24 Sqm	5B-02. 7 x 11 = 77 sqm Five Fingers Exports India Pvt. Ltd.	5B-01. 11 X 11 = 121 Sqm WINDSON MACHINERY MANUFACTURING	5C-01. 18 x 6=108 sqm GALAXY PACKTECH	5C-02B. 6x5=30sqm CENTER R.H.ENGINEERING	5D-02-A & B. 48 sqm Rajoo excellence in extrusion 6x6=36sqm + 2x6=12sqm	5D-02.B. STAR FLEX Intl. 18sqm	5E-06. INT'L 9 sqm	5A 01. PRAGATI POLYPLAST 27 sqm	5E-05. INT'L 9 sqm	5E-04. ALTECH TECH 18 sqm	5E-03. PLASTINDIA 9 sqm
				5C-02 A. 12 X 5 = 60 Sqm QUALERO Technologies	5D-01-A & B. 12x11 = 132 sqm LohiaCorp		5E-02. AIPMA 12 sqm		5E-01. PLASTIVISION 7x3 21sqm		

EMERGENCY EXIT

EMERGENCY EXIT



HALL 5

All Machinery - Flexible Pkg, Woven Sacks, Injection Moulding, Extrusion, International Pavilion & Others

MAXIMUM CLEAR HEIGHT 10 MTRS

FREIGHT GATE : 6 Sqm

Entrv / Exit: 6 Sam

EMERGENCY EXIT: 4 Sqm

HALL - 6 (Hanger)

Freight Gate

UPDATED : 14.05.2026

7 A-07 7 X 9 = 63 SQM

PRAGATI EXTRUSION

6B-08 4 x 14 = 56 sqm + 9 sqm = 65 sqm

SBM INDUSTRIES

6A 04 & 06 6 X 5 = 30 Sqm

6A 05 6x4=24 sqm

EXTRUSION TECH

6B-07 10x6=60 sqm

KBM PLASTIC M/C. LLP

6B 05 5x3 = 15 sqm

6B 06 5x3 = 15 sqm

6C 10 9 sqm

6C 09. 9 Sqm

PASHUPATI GROUP

6C 08

SARVODAYA

15 Sqm

6C 07

GADGETTO 9 Sqm

6C 06. 9 sqm

SHAH AGRO PLAST

Shah AgroPlast

6C 05

DEVAR SONS 12 Sqm

6C 04

LORANDI

Lorandi Silos 15 Sqm

6A 03 A 3 X 5 = 15 Sqm

6A 03 B RE Sustainability 3 x 5 = 15 sqm

6A 02 8 X 10 = 80 Sqm

GAURAV ENGINEERING

6B 04 5 x 9 = 45 sqm

HIKON

6B-03-A 6 x 6 = 36 sqm

HR PLASTIC INDUSTRIES

6B-03-B 6x3=18sqm

GRIP GEARS

Emergency Exit

Emergency Exit

6A 01 11 X 10 = 110 Sqm

RRPLAST

Extrusionline Front Runner

6B 02 5x9 = 45 sqm

Xtreme machines

6B - 01 6x9 = 54 sqm

CAPEX

CAPITAL EXTRUSION (INDIA)
UNIT OF SOHAN LAL MACHINES

6C 03 VSM AQUA 9 Sqm

6C 02. 9 sqm

BOMAX

SriLaxmi Entp 6C-01

KI Conequip

KI CONEQUIP

7x3 = 21 sqm



HALL-6 (Hanger)

RECYCLING PAVILION - (RECYLED RAW MATERIALS, RELATED MACHINERY, FINISEHD PRODUCTS), START-UPS & WOMEN ENTREPRENEURS ETC.

MAXIMUM CLEAR HEIGHT SIDES IS 5 MTRS	Entry / Exit: 5 MTRS
MAXIMUM CLEAR HEIGHT CENTER IS 10 MTRS	EMERGENCY EXIT: 3 MTRS

HALL-7

UPDATED : 12.05.2026

Freight Entry (6 mtr)

Freight Entry (6 mtr)

7A18. 9 sqm PLEXCONCIL	7B-33 4x4 = 16 sqm	7B-34 12 Sqm	7B-35 12 Sqm	7B-36 12 Sqm	7B-37 12 Sqm	7B-38 12 Sqm	7B-39 12 Sqm	7B-40 12 Sqm	7B-41 12 Sqm	7B-42 16 Sqm	7D 19 18 Sqm 7D18. 9sqm 7D17. 9 sqm 7D16. 9 sqm 7D15. 9 sqm 7D 14 VIJAY MECHANICAL 12 sqm
7A 17. 9 sqm FTCCI	17b-28 & 29 5 X 6 = 30 SQM	7B-30 9 sqm	7B-31 9 sqm	7B-32 5x3 = 15 sqm		7C-27 3 X 5 = 15 SQM	7C-28 9 SQM	7C-29 9 sqm	7C-30 12 Sqm		
7A16. 9 sqm Reserved		7B-20 & 21 VRUNDA enterprise 7 x 4 = 28 sqm	7B-22 3x4 = 12 sqm 7B-19 4x5 = 20 sqm	7B-23 3 x 4 = 12 sqm 7B-18 4x3 = 12 sqm	7B-24 3 x 4 = 12 sqm 7B-17 4x3=12 sqm	7C-20 8 x 3 = 24 sqm 7C-19 8 x 4 = 32 sqm	7C-25 9 SQM	7C-24 9 sqm	7C-23 12 sqm Ashling LLP		
7A15. 9 sqm Reserved											
7A14. 9 sqm Reserved											
7A13. 9 sqm Reserved 9 sqm											
7A12. 12sqm AIM AIM M/ctech											
7A-10 & 11 GSPMA 6x3=18sqm	7B-15 3x7 = 21 sqm ARMSTRONG ARMSTRONG MACHINERY	7B-16-A TAPMA 9 sqm	7B-16-B. 6x3=18sqm AQUATECH PLUS			7C-15 3x9 = 27 sqm		7C-16&17. 3x6=18 sqm			7D13. 9 sqm Navneet Plastics
7-A09 KPLEX 9 sqm	7B-14 3x7 = 21sqm SHREE SHANISWAR ENGINEERING WORKS	7B-13 3 x 9 = 27 sqm FOTEDAR Engineering Services & More FOTEDAR INDIA PVT. LTD				7C-14 3x9=27 Echaar Equipments		7C-13 3 x 6 = 18 sqm Re India Re Equipments (India)			7D12. 9 sqm BSI Bus.Solution
7-A08. 9sqm PMMAI	7B-11. 3 x 6 = 18 sqm Madhav Minerals & Chemical Pvt. Ltd.	7B-11-A. 12sqm SHILP GRAVURES	7B-12 3x6=18 sqm acme rolltech			7C-12A. 12sqm KEYWAY SALES ENTERPRISES	7C-12 B 9 sqm	7C-11 3x8 = 24 sqm			7D 11. 9sqm KIRAN electronics
7A07. 9sqm Pooja Engg Works	7B-10 4 x 7 = 28 sqm AMRUT PLASTIC ENGINEERS	7B-09 4 x 9 = 36 sqm Color & Comfort DIC INDIA LIMITED				7C-09 4x7=28 sqm insta COOLING ENGINEERING INSTA Cooling Engineering		7C-10 4x8 = 32 sqm			7D-10. 9sqm REPRO POLY SERVICES
7-A06. 9sqm SUNKEM Ind											7D-09. 9sqm EPIC Packaging
7-A05. 9sqm ASHRUJAD PERFECT POLYMERS	7B-09 4 x 9 = 36 sqm QYANG OYANG INDIA	7B-08 4 x 7 = 28 sqm Gayatrikrupa ENGINEERING WORKS				7C-08 4 x 9 = 36 sqm hubergroup		7C-06 & 07 9 X 6 = 54 SQM			7D-08. 9sqm Reliable AMARAVATI POLYMERS
7A-04 eLPie Choose to Craftpeople	7B-05 MCB MOULD PKP TECHNOLOGIES 5 x 7 = 35 Sqm	7B-07 5 x 9 = 45 sqm Airmax PNEUMATIC PRODUCTS Airmax Pneumatics Ltd.				7C-05 5x9 = 45 sqm HINDS HINDS PLASTIC MACHINES		KANKHAL® KANKHAL GROUP (BANSAL LAMINATES)			7D-07. 9sqm SAMRAT Masterbatch
Elpie Engineers 6x3=18sqm											7D 06 Dhananjay Engineers 6x3=18 Sqm
Emergency Exit											Emergency Exit
7A 03 Balvika Industrial Equipments 24 Sqm	7B-04 6 x 7 = 42 Sqm VINODRAI	7B-03 6 x 9 = 54 Sqm RAMCKO MACHINERY PVT. LTD.				7C-01 & 04 WINDSOR Partner in Progress 15 X 9 = 135 sqm		7C-03 7 x 6 = 42 sqm			7D-05 TANISHO Tanisho Corp 18 sqm
7A-02 5x3=15 sqm	7B-01 9 x 5 = 45 sqm	7B-02 JK KODY KODY EQUIPMENTS PVT. LTD. 9 x 11 = 99 Sqm						7C-02 8x6 = 48 sqm POSITIVE PLAST MACHINERY POSITIVE PLAST MACHINERY			7D-04 9 sqm ECS Earth Cooling
7A 01 BJS BJS Engineers 7x3 21 sqm											7D-03 Suhas Elastomer 9 sqm
											7D02. 9 sqm STAR DECALS
											7D-01 Techno Print 5x3=15 sqm



HALL 7

All Machinery - Flexible Pkg, Injection Moulding, Extrusion, Raw Materials, Master Batches, Finished Products & Others

MAXIMUM CLEAR HEIGHT SIDE - 5 MTRS

MAXIMUM CLEAR HEIGHT CENTER - 10 MTRS

Entry / Exit: 10 MTRS

EMERGENCY EXIT: 3 MTRS

